



MOUNTING INSTRUCTIONS FOR PC PANEL MOUNT CONNECTOR

To minimize problems during the mounting and for ease of alignment, the following procedures should be followed exactly. Tools required to mount the panel plug are:

- A Torque-Limited Slotted Screwdriver (1/4" tip) or Phillips Screwdriver depending on type of screw used.
- # 6-20 x 3/8 self-threading U.S. screws or 3.5 x 1.3 (9.5mm) Metric screws.

1.) The holes on the panel to be mounted should be pre-punched to the size as shown in Figure 1.

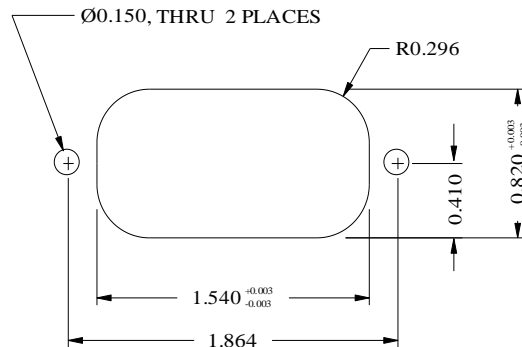


FIGURE 1. PANEL CABLE CONNECTOR MOUNTING HOLE

- 2.) Insert the assembled PANEL CABLE CONNECTOR from the back side of the panel. Carefully align the two screw holes of the panel to the panel cable connector flange holes (see Figure 2). Orient latch up or down according to your need.
- 3.) Place screws as specified above through the front panel and tighten to **5 in-lb of torque**** using a torque-limited screwdriver.
- 4.) Then orient cable.

****Notes:** Torque required to turn U.S. screw or Metric screw:
Recommended torque = 5 in-lb. (Maximum torque = 6 in-lb.)

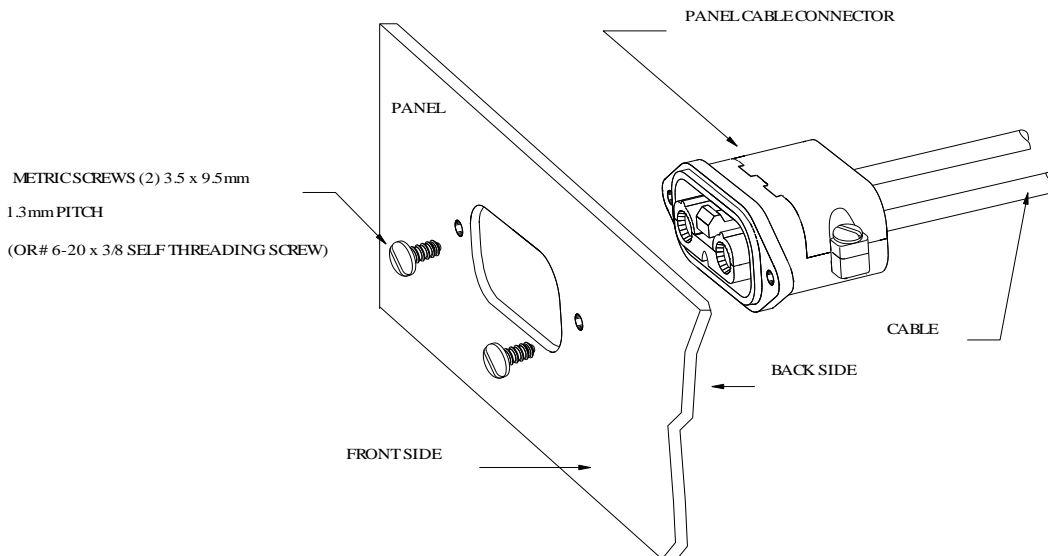


FIGURE 2. PANEL CABLE CONNECTOR ASSEMBLY

W.T. STOREY INC. Hickory Corners Road, Dalmatia 17017, 570-758-2000. Mon-Thurs: 7AM-5PM

NOVEMBER 2000
MPCMOUNT.DOC
©2000