

# Mounting Instructions For PP Panel Mount Plug

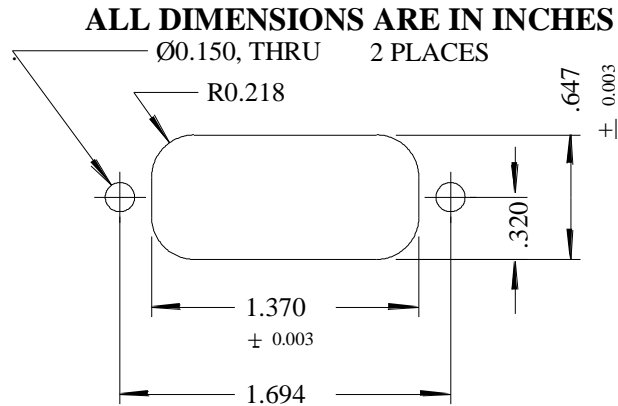
W.T. Storey Inc.  
866-355-0100  
www.wtstorey.com

Panel mount plugs are rated for 24 or 48 Volts DC and 30, 45, 65, and 85 Amps

To minimize problems during the mounting and for ease of alignment, the following procedures should be followed exactly. Tools required to mount the panel plug are:

- A Torque-Limited Slotted Screwdriver ( 1/4" tip ) or Phillips Screwdriver depending on type of screw used.
- # 6-20 x 3/8 Thread Forming Self-Tapping TYPE B U.S. screws or 3.5 x 1.3 (9.5mm) Metric screws.

1.) The holes on the panel to be mounted should be pre-punched to the size as shown in Figure 1.



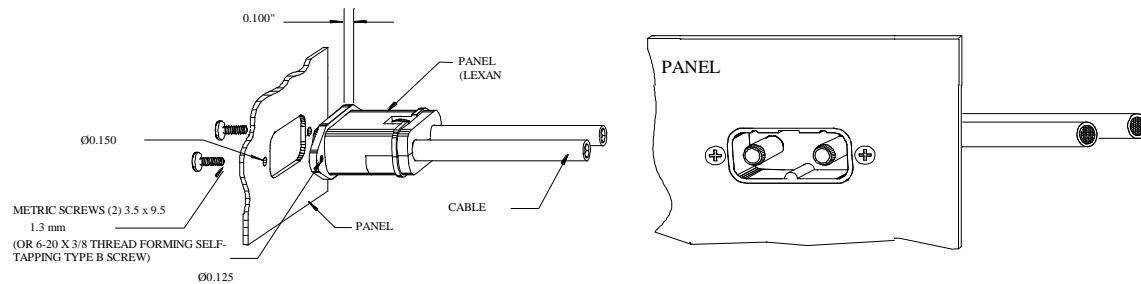
**FIGURE 1. PANEL MOUNTING HOLE**

- 2.) Insert the assembled PANEL PLUG from the backside of the panel. Carefully align the two screw holes of the panel to the panel plug flange holes (see Figure 2). Orient latch up or down according to your need.
- 3.) Place screws as specified above through the front panel and tighten to **5 in-lb of torque\*** using a torque-limited screwdriver.
- 4.) Then orient cable.

**\*Note:** Torque required to turn U.S. screw or Metric screw:

**Recommended torque = 5 in-lb.**

**Maximum torque = 6 in-lb.**



**FIGURE 2. PANEL PLUG**

W.T. Storey Inc. 720 Hickory Corners Rd, Dalmatia, PA 17017 570-758-2000. Mon-Thurs: 7 AM to 5 PM.